

myBlok

The Myblok portable toilet was designed to meet the needs of small and medium-sized companies.

The technology used makes the Myblok portable toilet one of a kind.

This portable toilet can be purchased in small quantities. It is available in a wide range of colours and the weight of moulded parts can be chosen according to customer needs. In addition, it is possible to customize the moulding in predefined areas and insert the customer logo.





TECHNICAL DETAILS

Height	230 cm - 90.5 in
Width	106 cm - 41.7 in
Depth	106 cm - 41.7 in
Door Opening	62 cm - 24.5 in
Waste Capacity	230 l - 60.8 gal
Weight Empty	73 kg - 161 lb
Floor Space	94×60 cm - 37×23.6 in
Packaging Height	250 cm - 98.4 in

COMMERCIAL DATA

Minimum order quantity	N. 2
Load quantity on a 40HC container	N. 44
Quantity full optional in a 40HC container	N. 32
Quantity in a truck load	N. 48
Quantity full optional in a truck load	N. 40
Customize logo on door/door frame	YES
Customize weight of single components	YES
Personalization color	YES, with extra charge
Lead time ex works	20 days + shipping
Payment terms	Flexible
Price	Average
Transport	Not included

STANDARD COLORS

Classic Blue (600), Light Blue (150), Olive Green (242), Emerald (153), Red (204), Orange (636), Yellow (612), Beige (201), Lime (191), Bright Green (657), Pink (831), White (553), Black (210), Grey (217), Dove Grey (626)

ACCESSORIES

URINAL, T-CIRCULATE, T-REVOLVE, T-FLUSH, T-WASH, T-LIGHT, T-ROLLER



rapidLoo

Rapidloo Demountable Portable Toilet was designed to guarantee more competitiveness to the operators in the industry while complying with the European Directive which states a specific weight-limit allowed by an individual to handle, implemented by Decree 81 dated 2008.

Thanks to this revolutionary product, operators can transport the unassembled portable toilet to the rental premises and assemble it there piece by piece in under 2 minutes without needing any tools, not even a screwdriver.

The patented closure system of Rapidloo Demountable Portable Toilet enables extremely easy piece-by-piece assembly, with none of the pieces weighing more than 12kg.



Rental Operators get real money-saving RESULTS by using RapidLoo:

- Anyone can lift RapidLoo parts that are disassembled and the individual parts are easily stacked on the trailer for easy manoeuvrability.
- If parts of RapidLoo are damaged, unlock the broken part and replace it with a new part in less than a minute.
- RapidLoo is designed so that you can fit 3 unassembled RapidLoo inside of 1 RapidLoo. Transport 4 times the amount of Traditional Portable Toilets in one trip, saving money on gas and emitting less pollution.
- During low-season, disassemble RapidLoo and store the individual parts neatly and organized taking up four times less the space.
- RapidLoo is assembled & disassembled in less than 2 minutes with no tools required.



TECHNICAL DETAILS

Height	218 cm - 86 in
Width	108 cm - 42.5 in
Depth	108 cm - 42.5 in
Door Opening	62 cm - 24.5 in
Waste Capacity	220 l - 58 gal
Weight Empty	82 kg - 180 lbs
Floor Space	104×50 cm - 41×19.5 in
Urinal	Included
Packaging	4 piece packs
Packaging height	248 cm - 97.6 in
Ventilation Pipe	n.2 Included
Toilet Paper Holder	n. 1 Included
Kit with snap levers chart	Included and mounted
Kit with 7 handles	Included and mounted

COMMERCIAL DATA

Minimum order quantity	N. 72/88
Load quantity on a 40HC container	N. 88
Quantity full optional in a 40HC container	N. 72
Customize logo on door/door frame	NO
Customize weight of single components	NO
Personalization color	Yes, with extra charge (Pantone colors reference)
Lead time ex works	15 days + shipping
Payment terms	Advance
Price	Average
Transport	Not included

STANDARD COLOR

Blue (1-Blu), Green (02-Verde)

ACCESSORIES

R-SANITIZE, HUB, T-ROLLER



space160

Space160 wheelchair accessible portable restroom is Spacious and designed to allow a wheelchair to fully turn around in the floor space. With its elegant design, Space160 can be placed in parks, beaches and events of all kinds, integrating itself discreetly in all environments. Its dimensions are in compliance with European law while allowing easy handling by just one operator thanks to its lightness and the wheel system.

Space160 is one of the few products available in the markets that comes standard with a Flush system and Hand-Wash Sink.





TECHNICAL DETAILS

Height	213 cm - 84 in
Width	160 cm - 63 in
Depth	160 cm - 63 in
Door Opening	90 cm - 35.5 in
Waste Capacity	105 l - 28 gal
Weight Empty	110 kg - 242.5 lb
Hand-wash sink	Included
Flushing system	Included

COMMERCIAL DATA

Minimum order quantity	N. 1
Load quantity on a 40HC container	About N. 30 unassembled
Customize logo on door/door frame	YES
Customize weight of single components	NO
Personalization color	YES
Lead time ex works	20 days + shipping
Payment terms	Flexible
Price	Medium
Transport	Not included

STANDARD COLOR

Classic Blue (600), Light Blue (150), Olive Green (242), Emerald (153), Red (204), Orange (636), Yellow (612), Beige (201), Lime (191), Bright Green (657), Pink (831), White (553), Black (210), Grey (217), Dove Grey (626)

ACCESSORIES

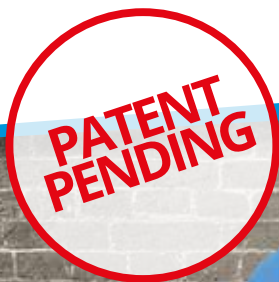
T-LIGHT, T-ROLLER FOR SPACE160



trioTank

TrioTank Vacuum Tank, International patent-pending, is the first vacuum tank in the world made entirely of polyethylene. It has a compact design that is light-weight & requires very little maintenance. Made of High Density Polyethylene (HDPE), this Portable Toilet Service Unit is rust-proof and corrosion-proof. Traditional Vacuum Tanks for the Septic Industry are made of expensive metals or steel, which over time begin to rust due to the toxicity of urine and human waste.

Trio meaning three... TrioTank is composed of three unique holding tanks for transporting liquids according to the needs of the user. There are two larger tanks which sit one on top of the other and secure the interior middle sphere-shaped vacuum tank. The two larger tanks have a capacity of 1000 litres / 265 gallons and are designed to hold fresh water &/ or a pre-mixed proportion of water & chemicals or as a secondary waste tank. Each of the Plastic holding tanks can be produced in an array of customizable colours.





TECHNICAL DETAILS FOR PTO AND MECHANICS

Height	180 cm - 71 in
Width	218 cm - 86 in
Depth	185 cm - 73 in
Waste capacity	950 l - 251 gal
Water/chemical capacity / or waste	1000 l - 264 gal
Fresh water capacity	1000 l - 264 gal
Hose length for water (N.2)	15 m - 49 ft
Hose length for waste suction (N.2)	15 m - 49 ft
Water inputs with relief valve	N. 4
Waste discharge	N. 1
Vacuum breaker valve calibration 0,5	N. 2
Pressure valve calibration +0,5	N. 1
Water drain caps	N. 4
Waste level indicator	N. 2
Water level indicator	N. 16
Water container exchanger	N. 1
MEC 1600 Geometrical Capacity	118.8 m ³ /h - 1980 l/min - 70 com
MEC1600 Max RPM	600 M - 1400 P/H
MEC1600 Max abs pressure	2,5 Bar - 36 PSI
MEC 1600 Max vacuum	89% - 26.3" inHg
MEC 1600 Max continuous vacuum	60% - 18" inHg
MEC 1600 Power at max vacuum KeyWest (HP)	4,5 kW 6 HP

COMMERCIAL DATA

Minimum order quantity	N. 1
Load quantity on a 40HC container	N. 6
Color customization	YES, with extra charge
Lead time ex works	30 days + shipping
Payment Terms	Flexible
Transport	Not included
Price	Average

STANDARD COLOR

Classic Blue (600), Bright Green (657)

ASK ABOUT OTHER MODELS

CONTACT US FOR MORE INFORMATION



myMex

The Mymex portable toilet was designed to meet the needs of small and medium-sized companies.

The technology used makes the Mymex portable toilet one-of-a-kind.

This portable toilet can be purchased in small quantities. It is available in a wide range of colors and the weight of moulded parts can be chosen according to customer needs. In addition, it is possible to customize the moulding in predefined areas and insert the customer logo.

Mymex is bigger than Myblok and is more suitable for the markets in the Americas.





TECHNICAL DETAILS

Height	230 cm - 90.5 in
Width	115 cm - 45 in
Depth	120 cm - 47 in
Door Opening	62 cm - 24.5 in
Waste Capacity	250 l - 55 gal
Weight Capacity	75 kg - 165 lbs
Floor Space	99×54 cm - 39×21.2 in
Packaging	Packs of 2 toilets

COMMERCIAL DATA

Minimum order quantity	N. 2
Load quantity on a 40HC container	N. 40
Quantity full optional in a 40HC container	N. 32
Quantity in a truck load	N. 52
Quantity full optional in a truck load	N. 44
Customize logo on door/door frame	YES
Customize weight of single components	YES
Personalization Color	YES, with extra charge
Lead time ex works	20 days + shipping
Payment terms	Flexible
Price	Average
Transport	Not included

STANDARD COLOR

Classic Blue, Grey, Green, Red, Yellow, Beige, Military



Chemicals

T BLUSTAR offers a full line of chemicals, deodorizers and fragrance enhancers for Portable Toilets. Our portable toilet chemicals are environmentally friendly and easy to use. We offer formaldehyde liquid deodorizers, non-formaldehyde liquid deodorizers, easy drop-and-go packets with concentrated deodorizers, air fresheners to hang in the portable toilet and urinal tabs.

T BLUSTAR Chemicals meet the GHS Standards, or the Globally Harmonized System of Labeling Chemicals. This means that T BLUSTAR Portable Toilet Deodorizers have a specific label/document valid around the world that explains any chemical hazards to anyone potentially exposed. GHS documents available upon request.





BLUPAC – T BLUSTAR

Description: Non-formaldehyde deodorizer packets

Code: TB-CHEM-3

Quantity: 300 / Case



HALO – T BLUSTAR

Description: Fragrance enhancers

Code: TB-CHEM-4

Quantity: 500 / case



BLUTAB – T BLUSTAR

Description: Urinal tabs

Code: TB-CHEM-5

Quantity: 144 / case



BLUWATER

Description: Non-formaldehyde Liquid Deodorizer

Quantity: 5 gal / 18.927 Litre (codice: TB-CHEM-6)

Quantity: 55 gal / 208.197 Litre (codice: TB-CHEM-7)



R-sanitize

R-sanitize for RapidLoo and Spike is an innovative accessory that can be used as recirculation or fresh water flush & hand-wash at the same time. The sink meets EU standards that can wash all the way up to the elbow. The used-grey-water from the sink discharges directly into the fresh water flush tank, optimizing the quantity of the water. Customers can decide how to use R-sanitize: hand-wash/flush or hand-wash/recirculation.

This sanitary accessory is elegant, compact, light-weight and very easy to install. The connector hoses have easy snap-on / snap-off connectors that can be attached and detached in seconds.





TECHNICAL DETAILS

Height	106 cm / 42 in
Width	62 cm / 24 in
Depth	17 cm / 7 in
Sink - Fresh Water Tank Capacity	14 l / 4 gal
Flush - Fresh Water Flush Tank Capacity	30 l / 8 gal
Flush - Fresh Water Liquid Capacity*	44 l / 12 gal
Weight Empty	14,5 kg / 39 Lbs
Hand Wash Sink	Included
Flush	Included
Recirculate	Included
2 Foot Pumps	Included
Connectors	Easy Snap on / Snap Off

* Flush Liquid Capacity is increased because the Used Hand-wash water drains into the flush tank

COMMERCIAL DATA

Minimum Quantity	N. 2
------------------	------

STANDARD COLOR

Blue or Green



rapidLoo PRO

Rapidloo PRO is the chemical toilet that can be assembled in less than 3 minutes and without use of tools!

The innovative patented assembly system introduces very many advantages that, until today, had been unheard of among operators of this sector.

The rapid assembly system of Rapidloo PRO, Demountable Chemical Toilet, enables amazingly easy assembly of the cabin, component by component, with parts to be handled consequently of a weight of no more than 12 Kg (see internat. standards regarding lifting). Furthermore, Rapidloo PRO may be pre-packed in a 4-toilet packaging form, exploiting the same space as one assembled cabin.

The Demountable Chemical Toilet by Tblustar can be provided with an internal wash hand basin also functioning as a flush system.





TECHNICAL DETAILS

Height	220 cm
Width	110 cm
Depth	120 cm
Door Opening	62 cm
Waste Capacity	220 l
Weight Empty	80 kg
Floor Space	106×50 cm
Urinal	Not included
Packaging	4 piece packs
Packaging height	270 cm
Ventilation Pipe	n.1 diameter 60 mm
Paper Holder	n. 1 Included

COMMERCIAL DATA

Minimum order quantity	N. 4
Load quantity on a 40HC container	N. 80
Quantity full optional in a 40HC container	N. 68
9mt truck + 6mt trailer	N. 100
9mt truck + 6mt trailer (full optional)	N. 88
Customize logo on door/door frame	YES
Customize weight of single components	YES
Personalization color	YES
Lead time ex works	15 days + shipping
Payment terms	Advance
Price	Average
Transport	Not included

STANDARD COLOR

Electric Blue (B03), Ocean Blue (B02), Bordeaux (R02), Lemon (G02), Recycled Grey (Y05), Granite (S01), Lime (G04), Pink (V01), Orange (001), Red (R01), Sand (S02), Bright Green (V02), Dark Green (V05)

ACCESSORIES

RP-CLEAN, T-ROLLER, TRANSPALLET, RP-CIRCULATE, T-MAT



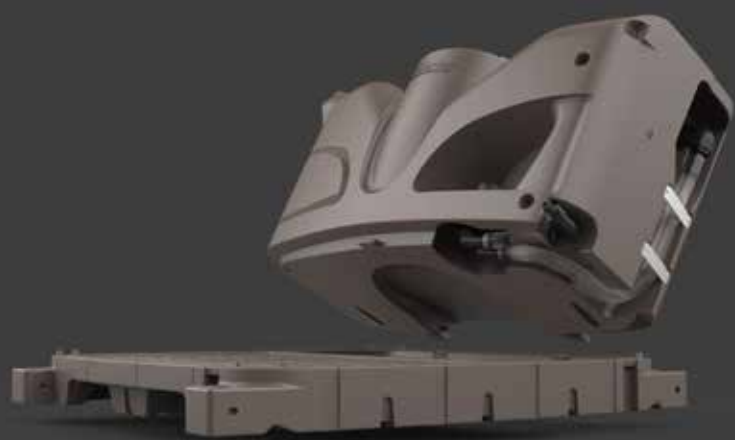
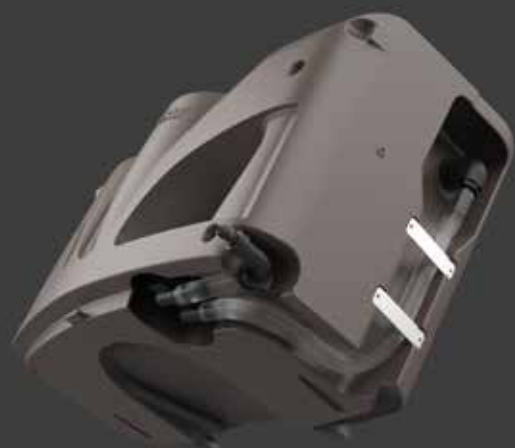
RP·clean

RP-clean for RapidLoo PRO is the world's first accessory that functions as Wash Hand Basin or simultaneously as Wash Hand Basin+flush.

The RP-clean wash hand basin can be simply installed, thanks to its fitted quick couplings.

If the RapidLoo PRO item is provided with the "Circulate" system, RP-clean can be installed not just as a wash hand basin but also as a "Flush" system.





TECHNICAL DETAILS

Height	105 cm
Width	56 cm
Depth	22 cm
Waste Capacity	60 l
Weight Empty	10 kg

COMMERCIAL DATA

Minimum Quantity	N. 2
Color Personalization	YES, with extra cost
Price	Very competitive

STANDARD COLOR

Gray



RP-Twin

RP-Twin is the Tblustar solution for all who require a stand alone hand wash basin to be used for outdoor events. RP-Twin consists in two hand wash basins with a capacity of 60 litres for clean water and 60 litres for collecting the wastewater. The water is dispensed thanks to a convenient pedal pump, and the pleasing design solution with its compact spaces includes various compartments for storage of objects.

RP-Twin embodies all Tblustar's innovations. The wash hand basin is the assembly of two RP-clean units that can be re-used rapidly and independently inside RapidLoo PRO toilets!





TECHNICAL DETAILS

Height	105+40 cm
Width	56 cm
Depth	44 cm
Fresh Water Capacity	60 l
Grey Water Capacity	60 l
Weight Empty	30 kg

COMMERCIAL DATA

Minimum Quantity	N. 1
Color Personalization	YES, with extra cost
Price	Very competitive

STANDARD COLOR

Gray

